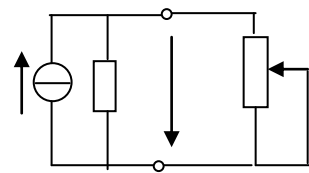
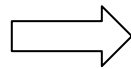
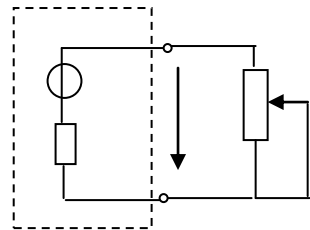
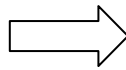
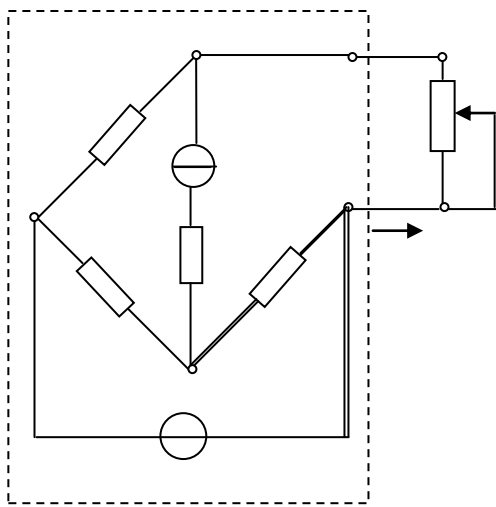


2016.6



.....	1
.....	3
.....	6
.....	11
.....	13
.....	17
.....	21
.....	26
.....	31






2

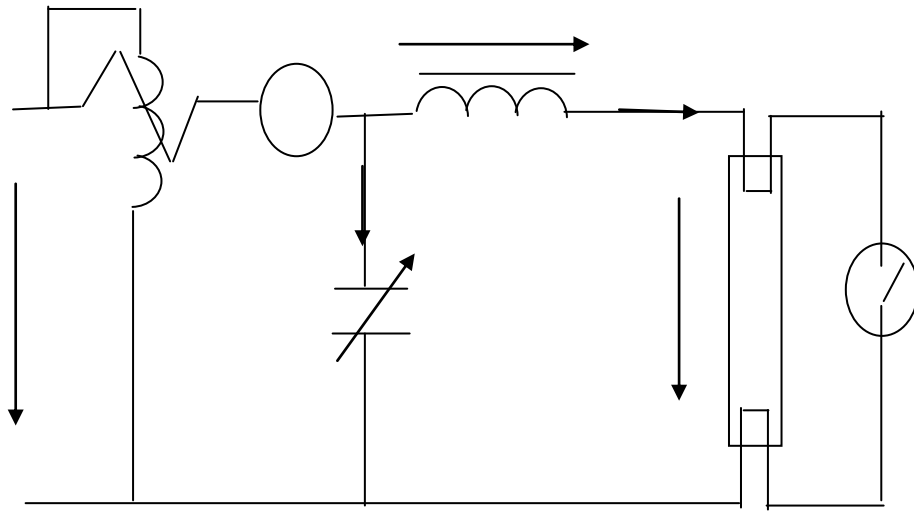
1

$U_K$

$I_d,$

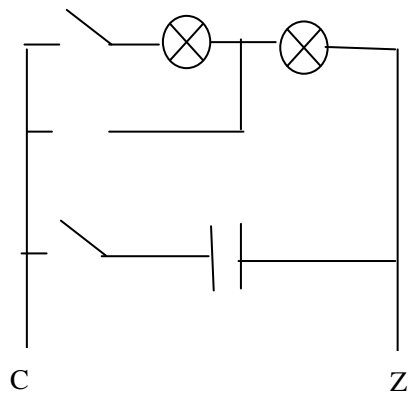
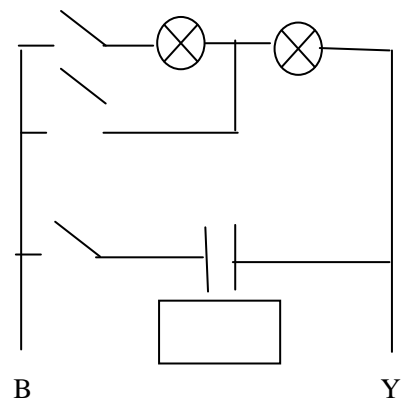
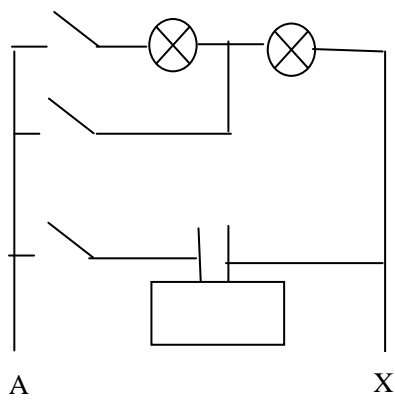
$R_{AB}$





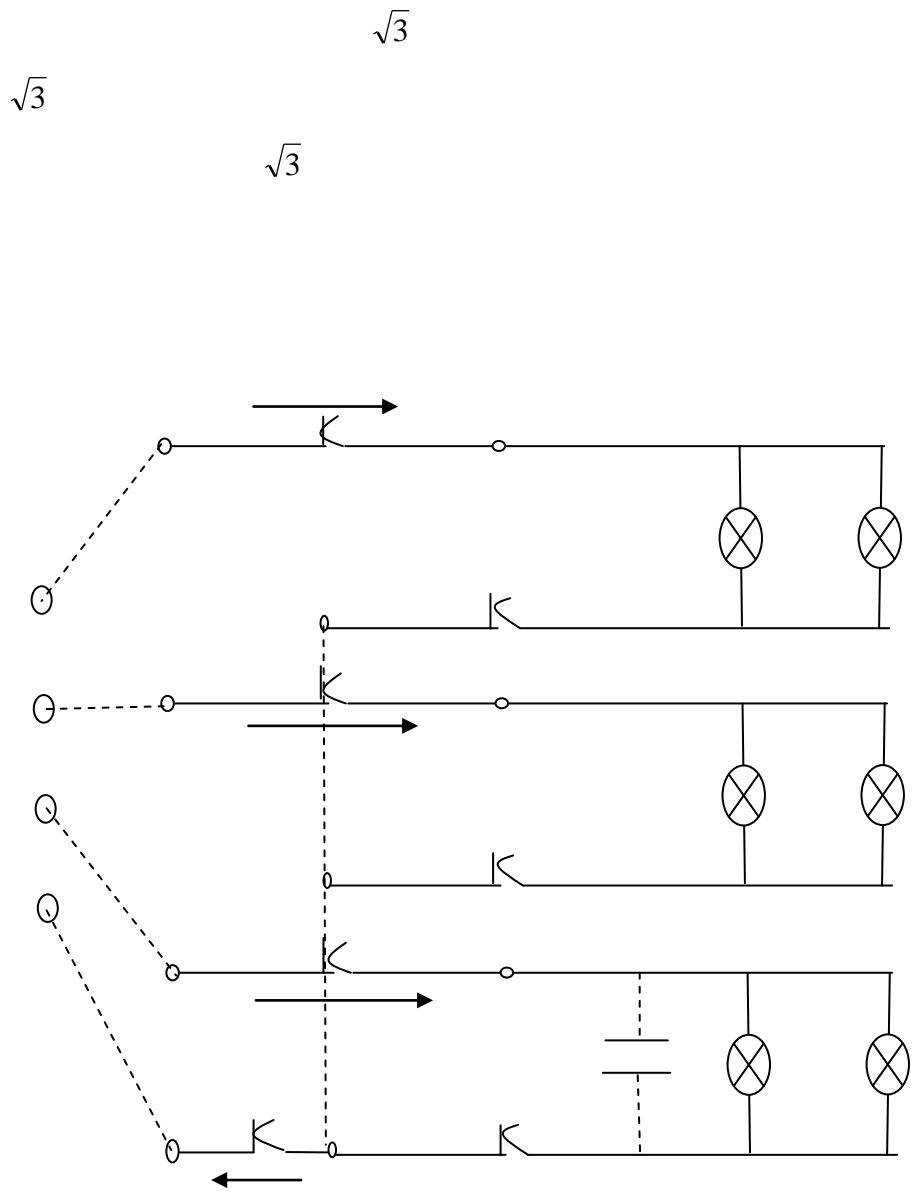


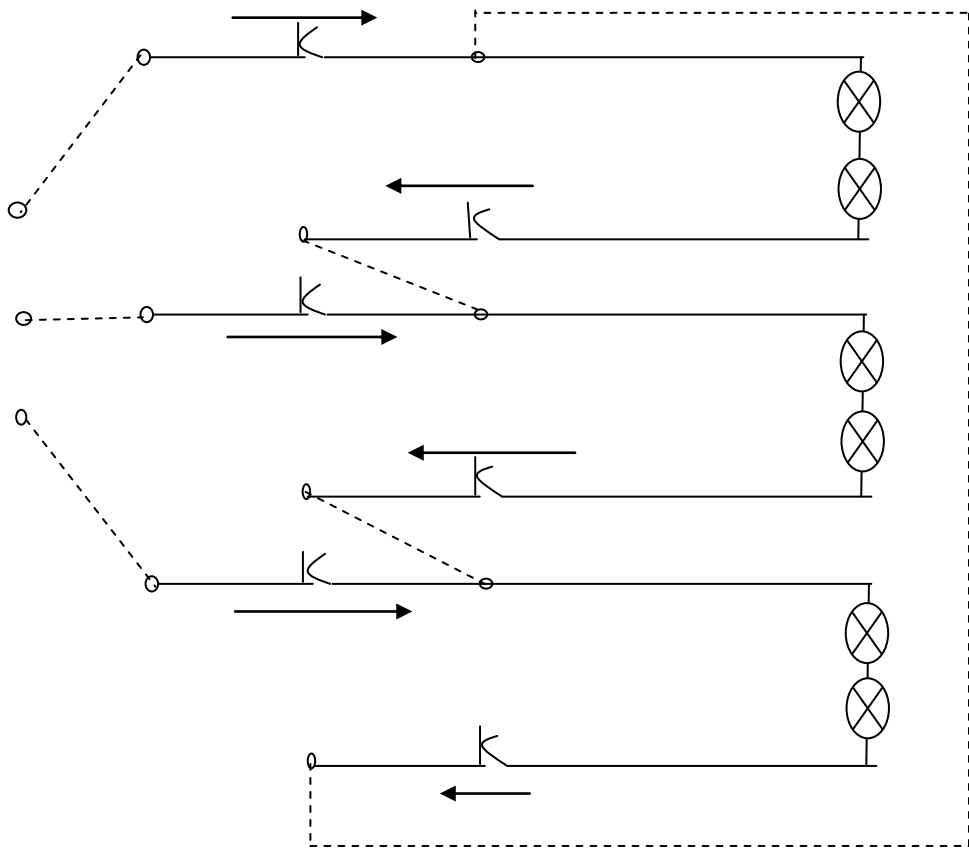


$\sqrt{3}$

$\sqrt{3}$





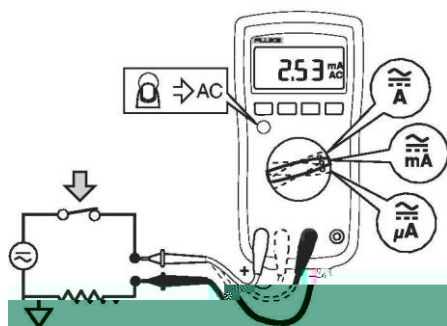


$$\sqrt{3}$$

$$\sqrt{3}$$











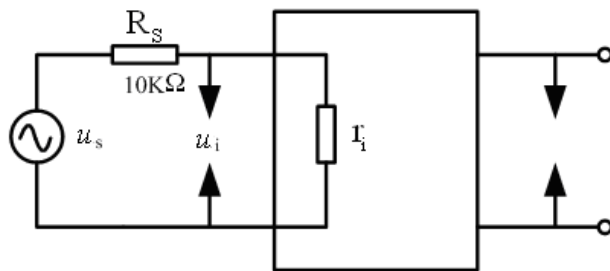


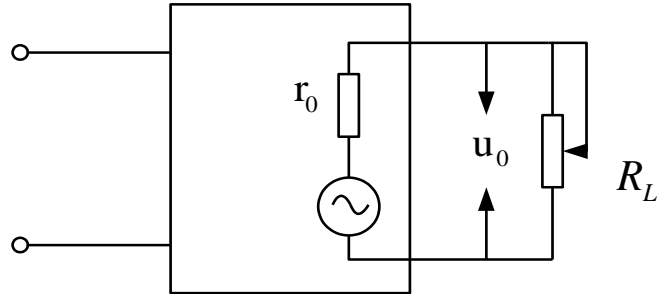
$f=1\text{KHz}$   $50\text{mV}_{\text{P-P}}$



$\beta$



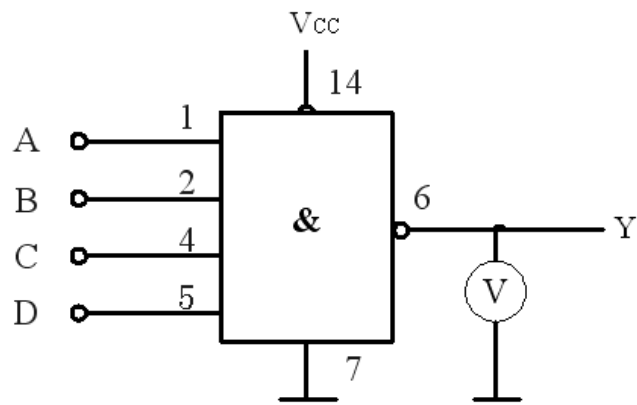


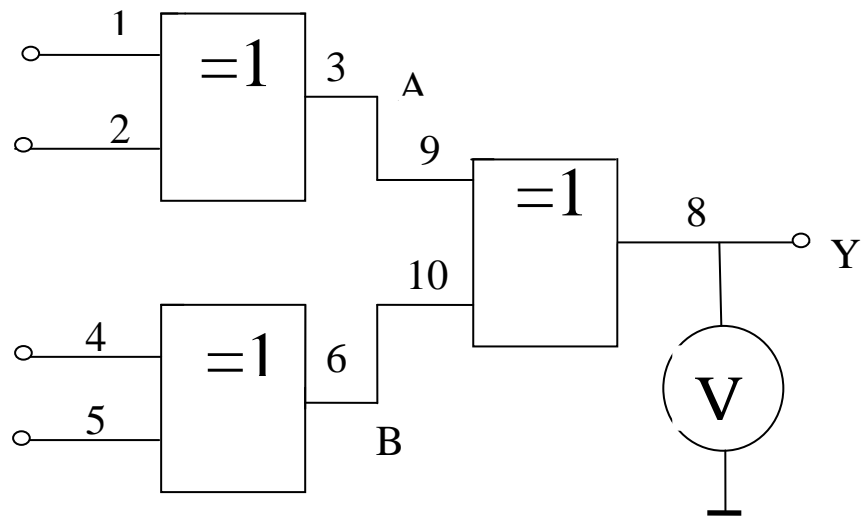


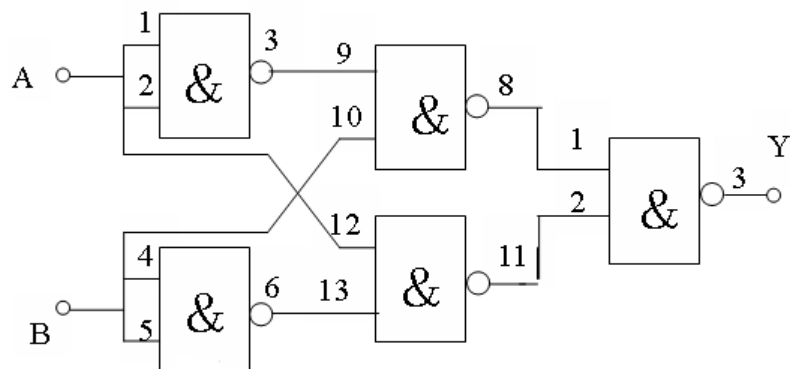
6

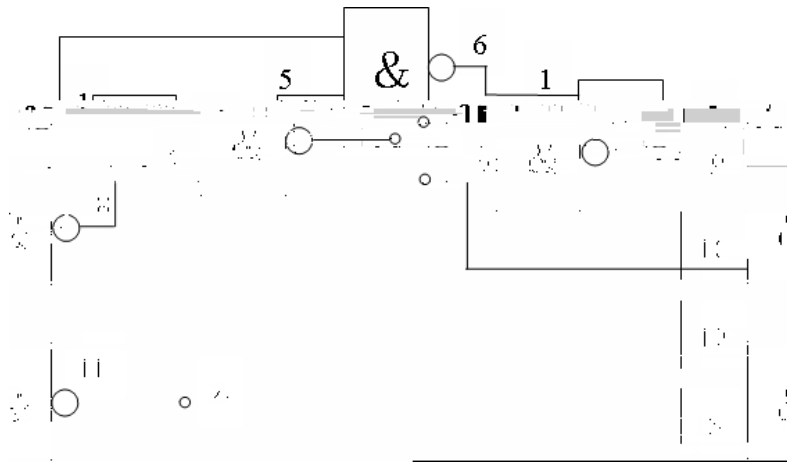




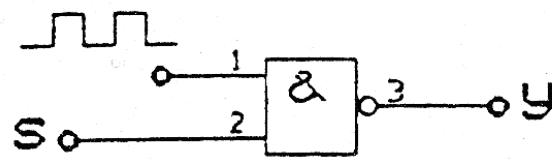



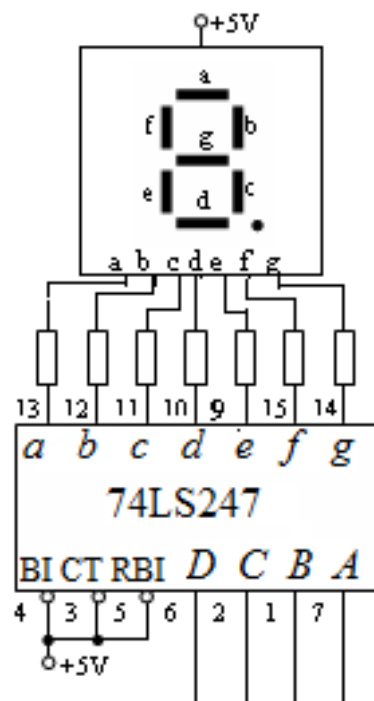


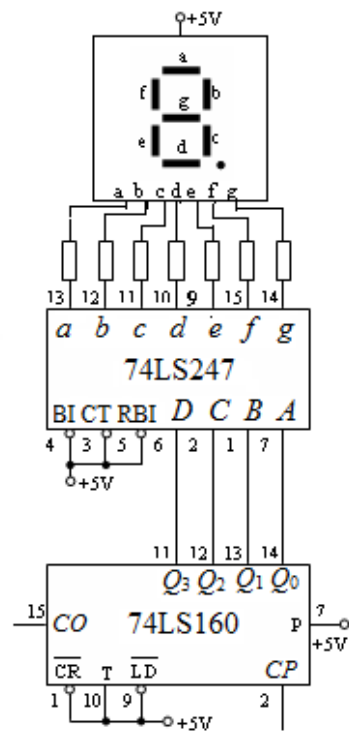


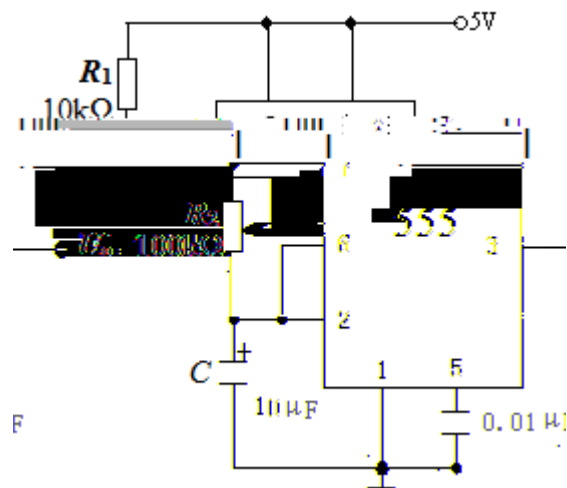
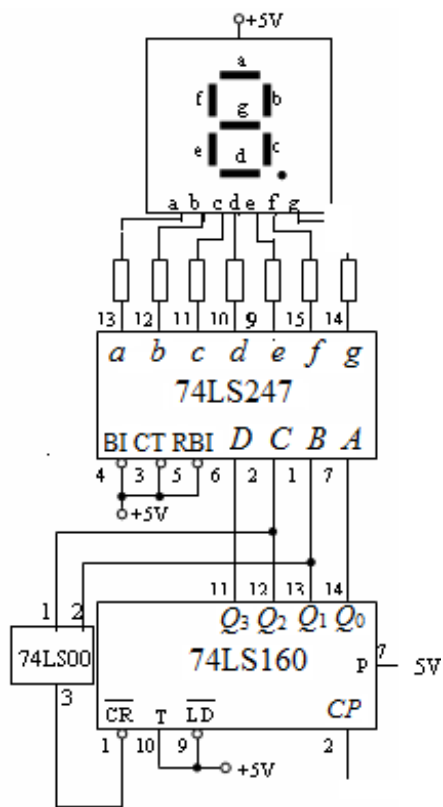
$$F = \overline{\overline{A+B}} = \overline{\overline{A} \cdot \overline{B}}$$

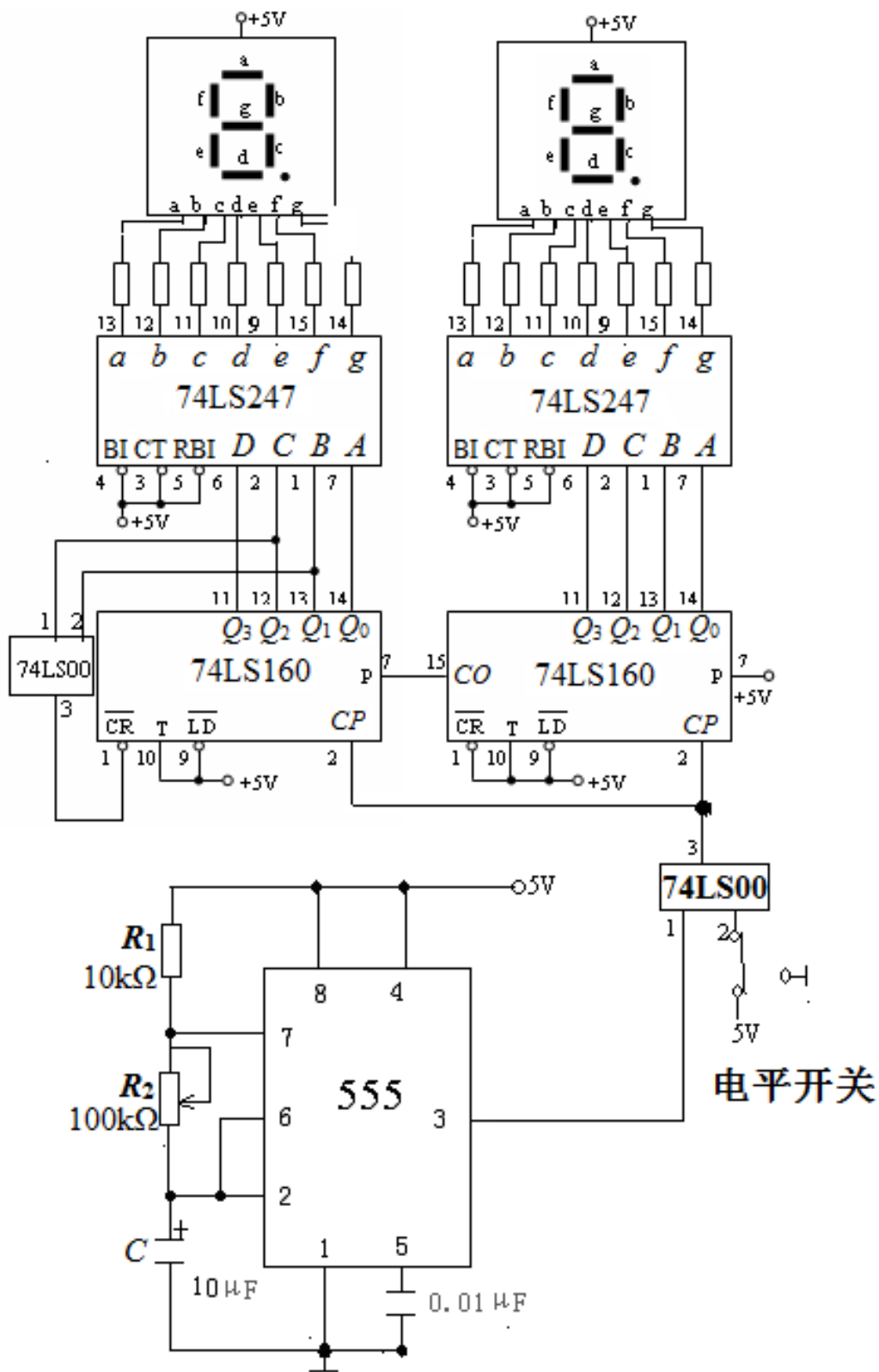




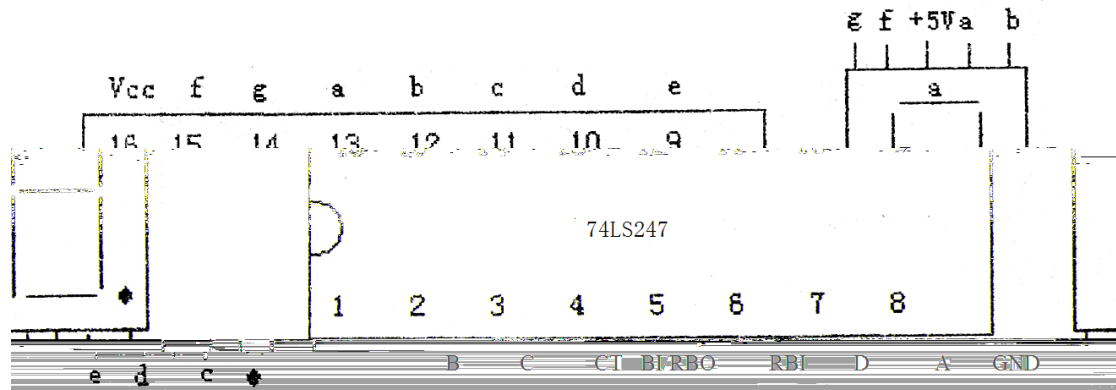








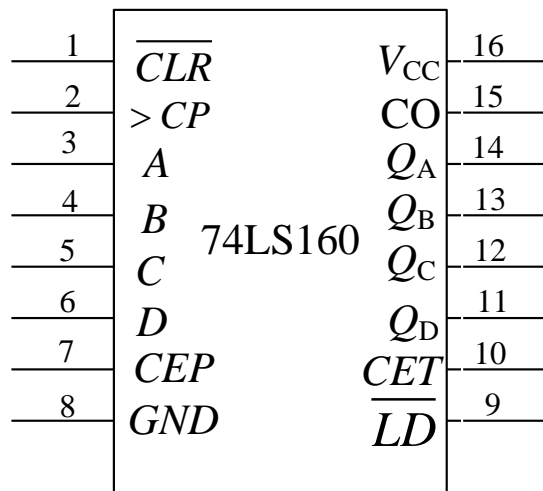


数码引脚图

引脚图

74LS247 功能表:

cdefg	显示	CT	RBI	BI/RBO	D	C	B	A	ab
00000	测试	0	X	1	X	X	X	X	00
1111	全灭	X	X	0	X	X	X	X	1111
0000001	0	1	1	1	0	0	0	0	
1111111	9	1	0	0	1	0	0	1	



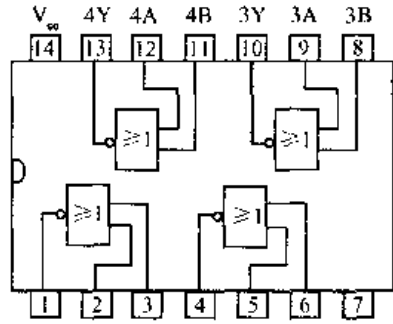
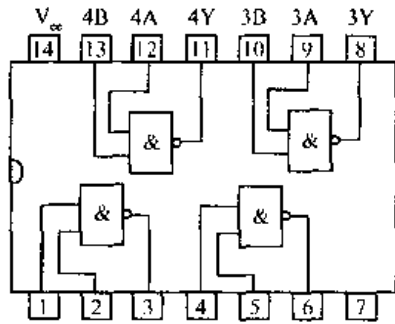
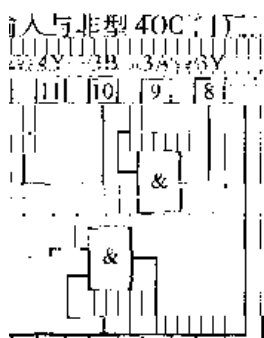
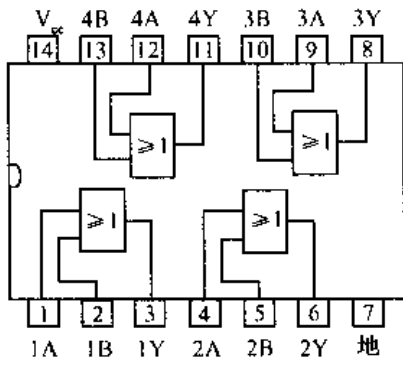


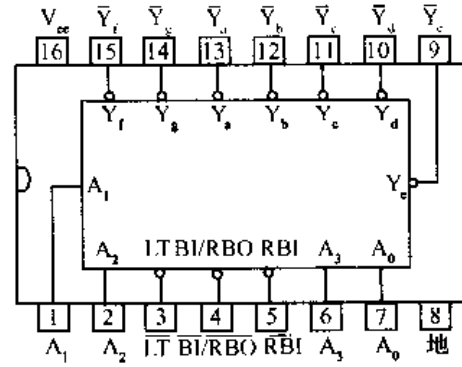
图 2A 4002B 202B 74LS00 1 10 11 12 13 14 V<sub>CC</sub> 4B 4A 4Y 3B 3A 3Y 地 1 2 3 4 5 6 7

图 2B 4002B 202B 74LS02 1 10 11 12 13 14 V<sub>CC</sub> 4Y 4A 4B 3Y 3A 3B 地 1 2 3 4 5 6 7

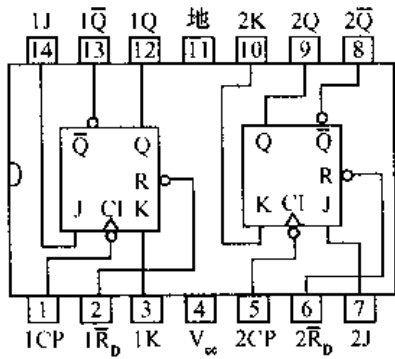




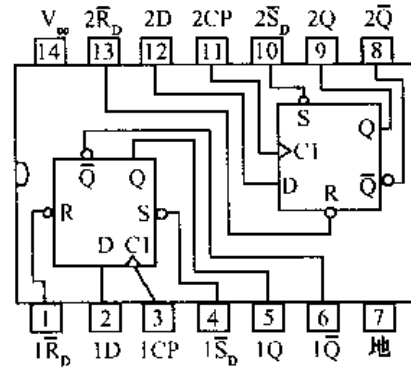
74LS32(2输入4或门)



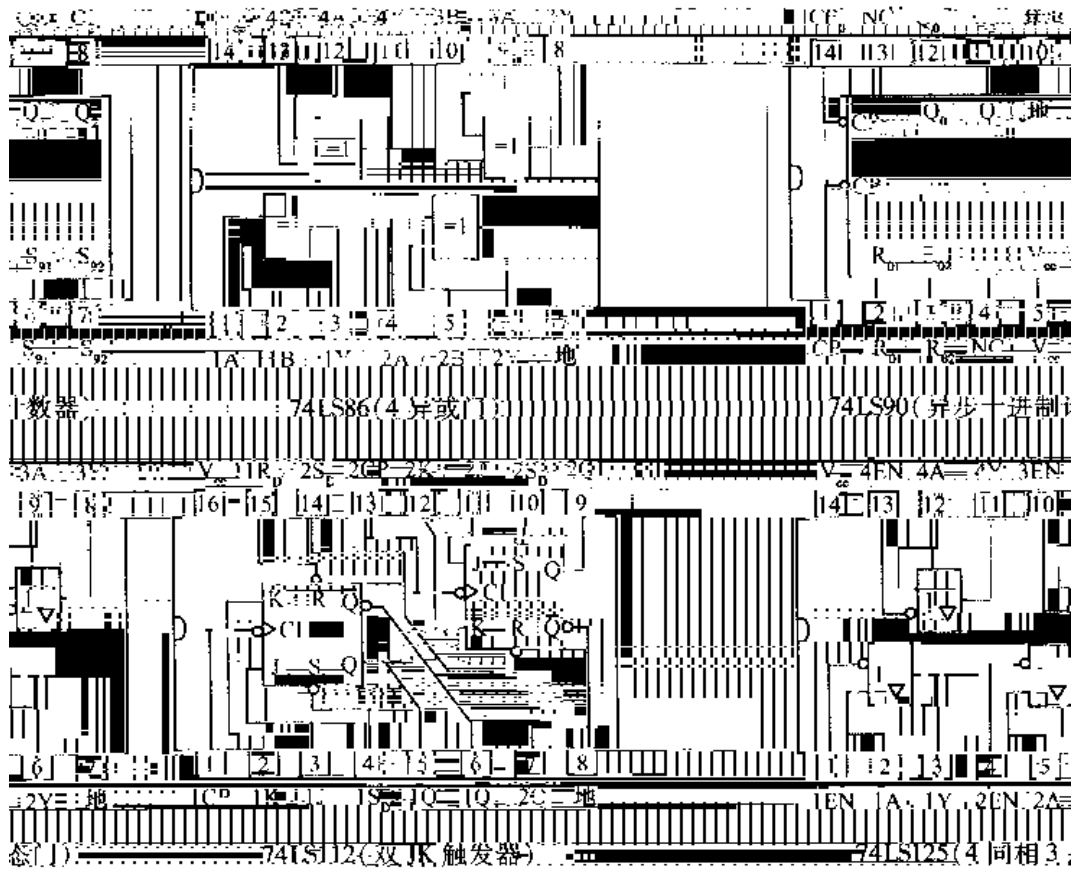
74LS247(BCD—七段译码/驱动器)

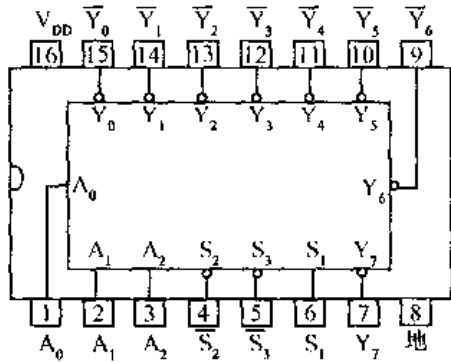


74LS73(双JK触发器)

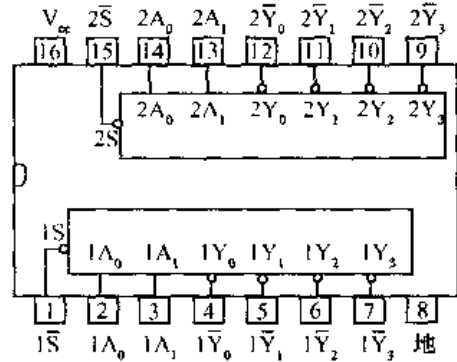


74LS74(双D触发器)

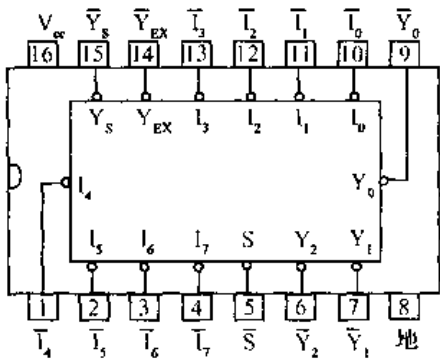




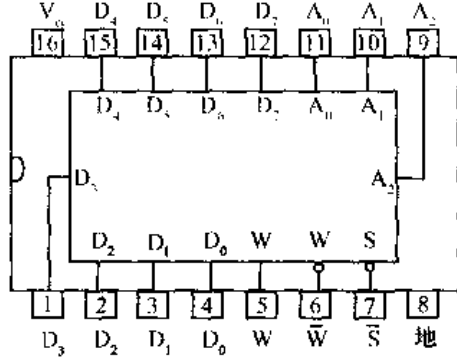
74LS138(3线—8线译码器)



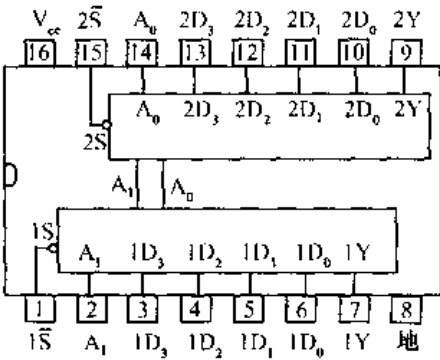
74LS139(双2线—4线译码器)



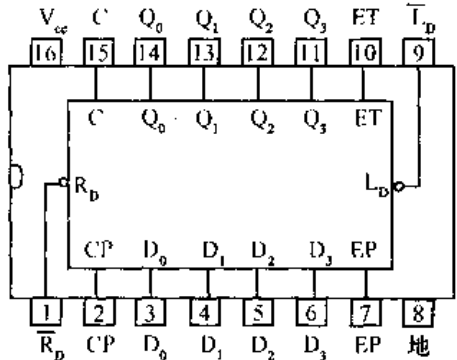
74LS148(8线—3线编码器)



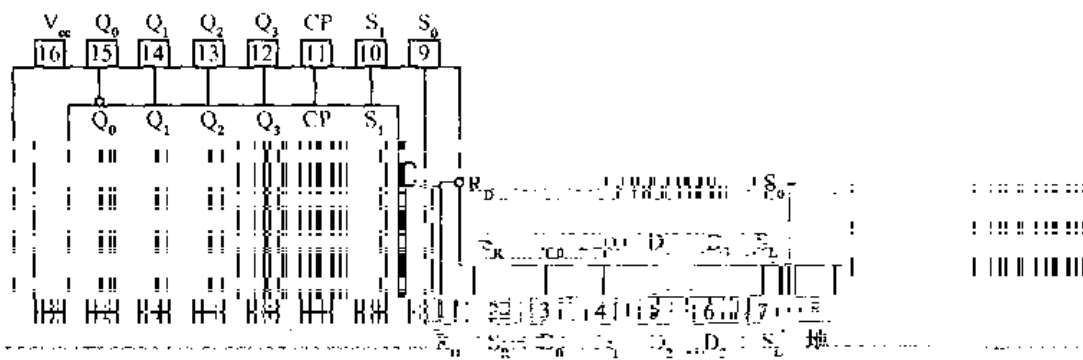
74LS151(8选1数据选择器)



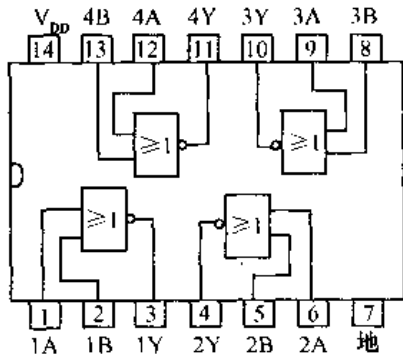
74LS153(双4选1数据选择器)



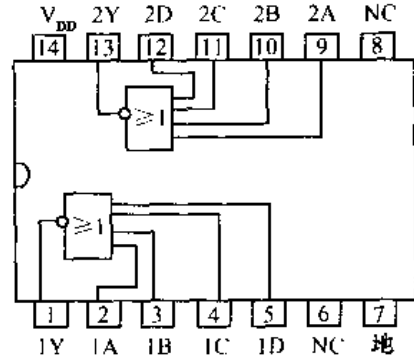
74LS160/74LS161(同步10/16进制计数器)



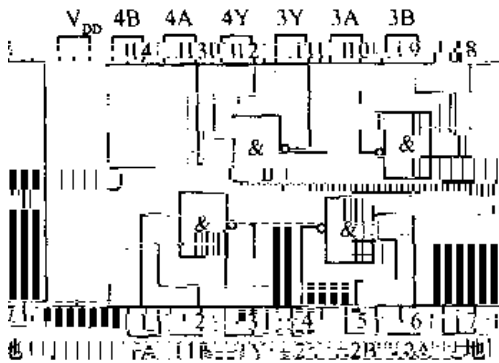
74LS194(双向移位寄存器)



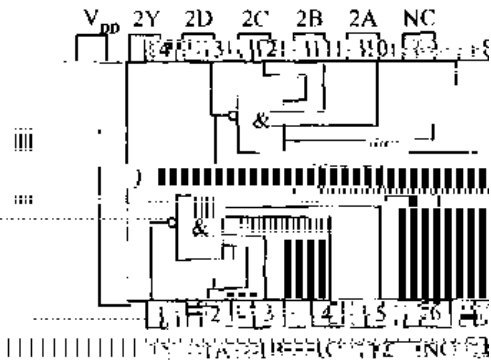
CC4001(2 输入 4 或非门)



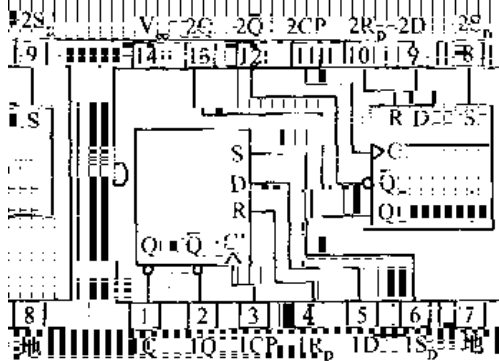
CC4002(4 输入 2 或非门)



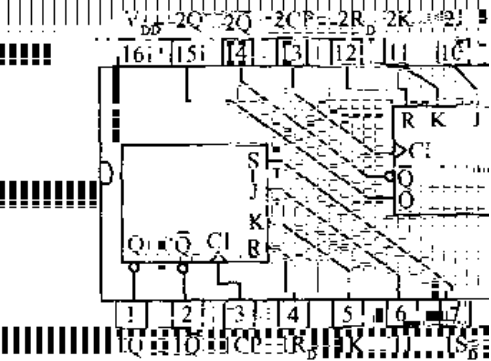
CC4011(2 输入 2 与非门)



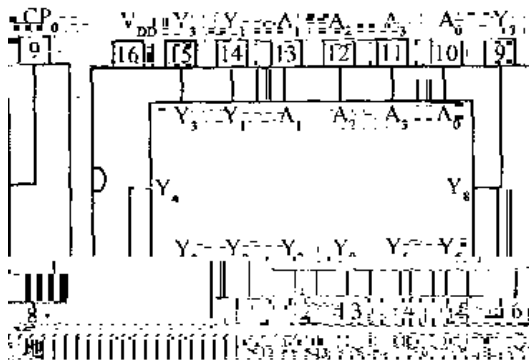
CC4012(4 输入 2 与非门)



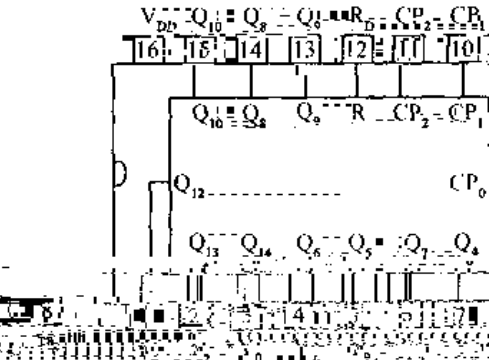
CC4013(双 D 触发器)



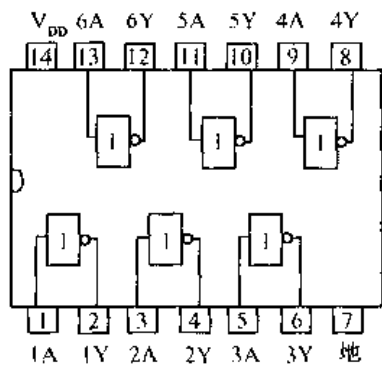
CC4027(双 JK 主从触发器)



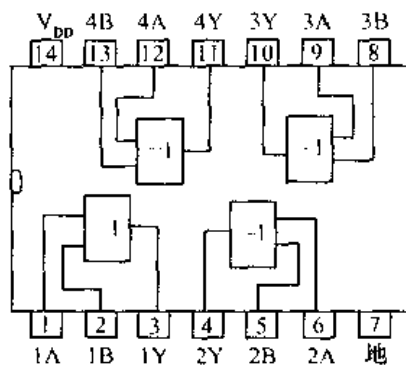
CC4060(14 位串行计数器/振荡器)



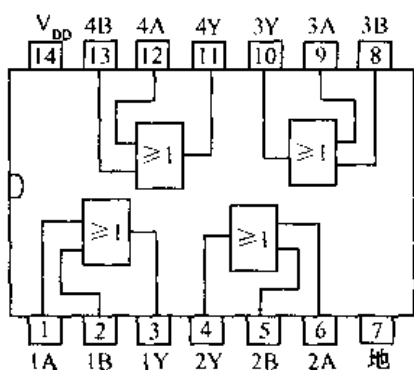
CC4028(BCD 4 位二进制译码器)



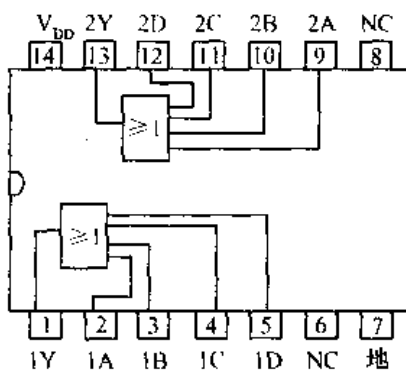
CC4069(6反相器)



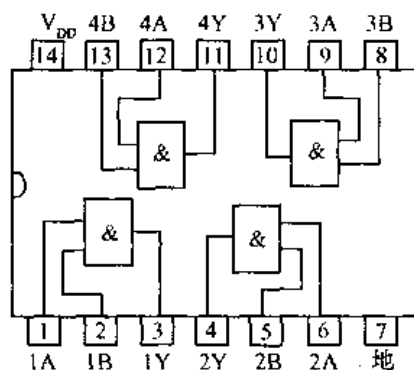
CC4070(4异或门)



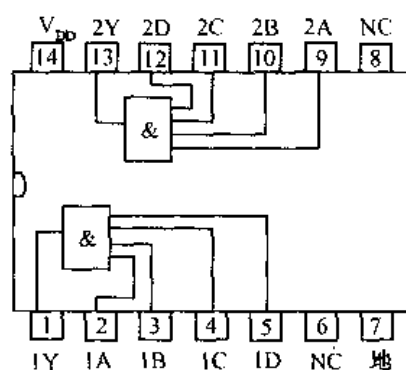
CC4071(2输入4或门)



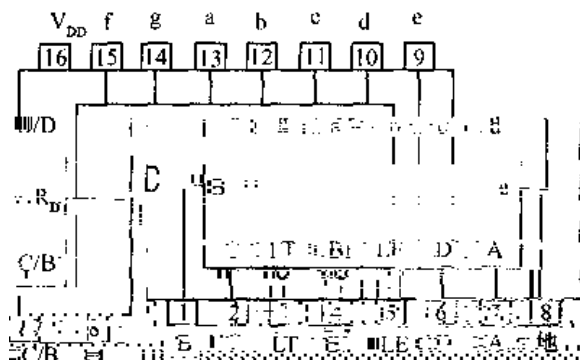
CC4072(4输入2或门)



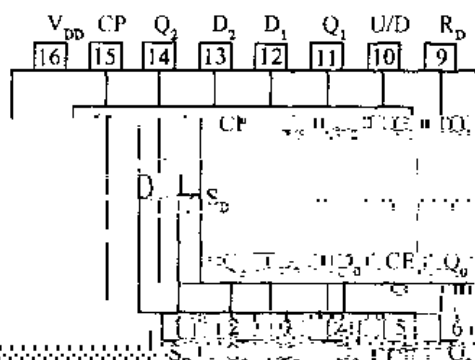
CC4081(2输入4与门)



CC4082(4输入2与门)



控制计数器 CC4511 (BCD-七段译码/驱动器)



通用计数器/分频器 CC4516 (4510) (通用计数器/分频器)